

AUDIOVISUAL SYSTEM SCOPE OF RESPONSIBILITY MATRIX			
ITEM	FURNISHED BY	INSTALLED BY	NOTES
INFRASTRUCTURE			
CONTAINMENT, CONDUIT, JUNCTION BOXES, WIREWAYS AND OTHER ELECTRICAL (CONSTRUCTION RELATED) ROUGH-IN WORK PERTAINING TO THE INSTALLATION OF THE AV SYSTEMS.	GENERAL CONTRACTOR/EC	GENERAL CONTRACTOR/EC	SEE AV SPECIFICATION AND DRAWINGS FOR REQUIREMENTS.
FLOOR BOXES OR POKE-THRU WITH SHARED ACCESS FOR AUDIOVISUAL, TELE/DATA AND POWER SYSTEMS.	GENERAL CONTRACTOR/EC	GENERAL CONTRACTOR/EC	SEE AV SPECIFICATION AND DRAWINGS FOR REQUIREMENTS.
IN-WALL BOXES WITH SHARED ACCESS FOR AUDIOVISUAL, TELE/DATA AND POWER SYSTEMS.	GENERAL CONTRACTOR/EC	GENERAL CONTRACTOR/EC	SEE AV SPECIFICATION AND DRAWINGS FOR REQUIREMENTS.
ALL AC POWER RECEPTACLES AND RELATED ELECTRICAL REQUIREMENTS.	GENERAL CONTRACTOR/EC	GENERAL CONTRACTOR/EC	SEE AV SPECIFICATION AND DRAWINGS FOR REQUIREMENTS.
IT, TELE/DATA INFRASTRUCTURE AS REQUIRED FOR AV SYSTEMS.	GENERAL CONTRACTOR/EC	GENERAL CONTRACTOR/EC	CHANNEL TEST DUE BY ROOM READY DATE.
ALL LOW VOLTAGE AUDIOVISUAL CABLING.	AV CONTRACTOR	AV CONTRACTOR	CABLE SPEC AND RUN SHEETS TO BE PROVIDED TO AV CONSULTANT PRIOR TO INSTALL.
ALL LOW VOLTAGE AUDIOVISUAL TERMINATIONS.	AV CONTRACTOR	AV CONTRACTOR	
CATV			
CATV LICENSING COSTS, BUILDING RISER AND TAP AT MAIN SERVICE POINT.	OWNER/SERVICE PROVIDER	OWNER/SERVICE PROVIDER	OWNER TO INITIATE CATV SURVEY AND COORDINATE DISTRIBUTION REQUIREMENTS WITH STRUCTURED CABLING DESIGNER.
CATV COAX DISTRIBUTION FROM MAIN SERVICE POINT TO MDF, LOCAL IDF AND DISPLAY/CONFERENCE LOCATIONS.	GENERAL CONTRACTOR/EC	GENERAL CONTRACTOR/EC	REFER TO STRUCTURE CABLING PACKAGE FOR REQUIREMENTS.
CATV SPLITTERS, AMPLIFIERS, TERMINATIONS AND SIGNAL LEVEL TESTING.	OWNER/SERVICE PROVIDER	OWNER/SERVICE PROVIDER	OWNER TO COORDINATE FINAL INSTALLATION AND TESTING TO CORRESPOND WITH ROOM READY DATES.
CATV DIGITAL TUNERS (CABLE BOXES)	OWNER	AV CONTRACTOR	AV CONTRACTOR TO CONFIRM DIGITAL TUNER I/O REQUIREMENTS WITH OWNER.
EQUIPMENT			
WALL BLOCKING, UNI-STRUT/KINDORF, THREADED ROD, ETC AS REQUIRED FOR AC DEVICES.	GENERAL CONTRACTOR	GENERAL CONTRACTOR	AV CONTRACTOR TO COORDINATE LOCATIONS.
HANDLING OF ALL AV EQUIPMENT FROM BUILDING DOCK TO A SECURE LOCATION.	AV CONTRACTOR	AV CONTRACTOR	
FRONT PROJECTION SCREENS	AV CONTRACTOR	GENERAL CONTRACTOR	ELECTRICAL CONNECTIONS BY THE GENERAL CONTRACTOR/EC. AV CONTRACTOR TO COORDINATE LOCATIONS.
PROJECTOR MOUNTS, FLAT PANEL MOUNTS	AV CONTRACTOR	AV CONTRACTOR	ELECTRICAL CONNECTIONS BY THE GENERAL CONTRACTOR/EC. AV CONTRACTOR TO COORDINATE LOCATIONS.
PROGRAM SPEAKERS	AV CONTRACTOR	AV CONTRACTOR	
CEILING SPEAKERS (WITH BACK BOXES, TRANSFORMERS & GRILLES WHERE APPLICABLE)	AV CONTRACTOR	AV CONTRACTOR	
CEILING AND WALL MOUNTED LCD OR FLAT PANEL DISPLAYS AND CAMERAS	AV CONTRACTOR	AV CONTRACTOR	
CEILING MOUNTED VIDEO PROJECTORS AND LIFTS	AV CONTRACTOR	AV CONTRACTOR	
CONTROL SYSTEM TOUCH SCREENS AND OTHER HARDWARE	AV CONTRACTOR	AV CONTRACTOR	
PROVISION OF ALL OFE PC'S AND SERVERS (AS REQUIRED)	OWNER	AV CONTRACTOR	
LECTERNS AND TEACHERS STATIONS	MILLWORKER OR FURNITURE INSTALLER	MILLWORKER OR FURNITURE INSTALLER	CUTOUTS TO BE CONFIRMED AND SUPERVISED BY AV CONTRACTOR.
MILLWORK COUNTERTOPS, CREDENZAS, CONFERENCE TABLES AND GENERAL WOODWORK	MILLWORKER OR FURNITURE INSTALLER	MILLWORKER OR FURNITURE INSTALLER	AC CONTRACTORS TO CONFIRM ALL TABLE AND CREDENZA DIMENSIONS AND MODIFICATIONS PER THE MILLWORKER OR FURNITURE INSTALLER DRAWINGS.
LECTERNS AND TEACHERS STATIONS	MILLWORKER OR FURNITURE INSTALLER	MILLWORKER OR FURNITURE INSTALLER	AV CONTRACTOR TO PROVIDE CONNECTIVITY HATCH AUDIOVISUAL FACEPLATES.
COMMISSIONING, PROGRAMMING AND PROJECT MANAGEMENT			
TESTING, EVALUATION AND INSTALL OF EXISTING EQUIPMENT INTENDED FOR REUSE	OWNER	AV CONTRACTOR	
CONTROL SYSTEM AND AUDIO SYSTEM PROGRAMMING	AC CONTRACTOR	AV CONTRACTOR	AV CONTRACTOR WILL BE REQUIRED TO CONFIRM CODE REVISIONS AND MAKE ADJUSTMENTS TO DSP CODE IN FIELD. SEE SPECIFICATIONS.
PROJECT MANAGEMENT, SUPERVISION, TESTING AND COMMISSIONING OF THE AV SYSTEM	AC CONTRACTOR	AV CONTRACTOR	

CABLE TYPES SCHEDULE						
1. THESE CABLE TYPES ARE CITED TO ILLUSTRATE THE MINIMUM CABLE PERFORMANCE REQUIREMENTS. UNLESS OTHERWISE NOTED, CABLES FROM OTHER MANUFACTURERS (I.E. WEST PENN, COMM SCOPE, LIBERTY CABLE, ETC.) WILL BE CONSIDERED ACCEPTABLE IF DATA SHEETS ARE SUBMITTED PRIOR TO INSTALLATION AND APPROVED BY AV CONSULTANT.						
2. THE USE OF PLENUM RATED CABLING IS REQUIRED FOR ALL AV CABLING RUN OUTSIDE OF METAL CONDUIT.						
3. THE CONTRACTOR SHALL ONLY USE PLUGS AND JACKS SPECIFICALLY MANUFACTURED AND DESIGNED FOR THE CABLE USED. UNLESS OTHERWISE NOTED, THIRD—CONNECTORS FROM MANUFACTURERS OTHER THAN THE CABLE MANUFACTURER, I.E. KINGS, SWITCHCRAFT, AMP, AMPHENOL, LEMO, NEUTRIK, ETC. WILL BE CONSIDERED ACCEPTABLE IF DATA SHEETS ARE SUBMITTED PRIOR TO INSTALLATION.						
CABLE TYPE	DESCRIPTION	MANUFACTURER	NON-PLENUM		PLENUM	
			MODEL	O.D.	MODEL	O.D.
AUDIO						
AUDIO (MICROPHONE & LINE LEVEL)	(1) PAIR 22 AWG TWISTED PAIR	BELDEN	9451	0.135"	9451P	0.127"
AUDIO (DIGITAL)	(1) PAIR 24 AWG (110 OHM) TWISTED PAIR	BELDEN	1800F	0.211"	1801B	0.165"
AUDIO (SPEAKER LEVEL, 70V)	2 CONDUCTOR 18 AWG STRANDED	BELDEN	5300UP	0.184"	82740	0.143"
AUDIO (SPEAKER LEVEL, SPEECH)	2 CONDUCTOR 16 AWG STRANDED	BELDEN	5200UP	0.208"	6200UE	0.176"
AUDIO (SPEAKER LEVEL, PROGRAM)	2 CONDUCTOR 14 AWG STRANDED	BELDEN	5100UP	0.260"	6100UE	0.218"
AUDIO (SPEAKER LEVEL, PERFORMANCE)	2 CONDUCTOR 12 AWG STRANDED	BELDEN	5000UP	0.302"	6000UE	0.252"
AUDIO (SPEAKER LEVEL, HIGH WATTAGE)	2 CONDUCTOR 10 AWG STRANDED	BELDEN	5T00UP	0.356"	6T00UP	0.308"
VIDEO						
VIDEO (UTP DIGITAL VIDEO)	ULTRA HIGH BANDWIDTH SHIELDED (4) PAIR 25 AWG TWISTED PAIR	CRESTRON	DM-CBL-U LTRA	0.311"	DM-CBL-U LTRA-P	0.304"
DATA (UTP CATEGORY)	REFER TO IT PROJECT STANDARDS					
VIDEO (ANALOG COMPONENT VIDEO)	RG-59/U 20 AWG 75 OHM COAX	BELDEN	8281	0.305"	88281	0.271"
VIDEO (DIGITAL VIDEO)	RG-59/U 20 AWG 75 OHM COAX	BELDEN	1505A	0.233"	1506A	0.196"
RF / CATV / ALS / WIRELESS ANT COAX						
RF (HARDLINE)	HARDLINE (75 OHM)	COMMScope	P3-500 SERIES JCAR			
RF (COAX <150')	RG-6/U (75 OHM)	BELDEN	9118	0.275"	1152A	0.265"
RF (COAX <250')	RG-11/U (75 OHM)	BELDEN	9064	0.400"	1153A	0.387"
RF (COAX TRIAX)	RG-11/U (75 OHM)	BELDEN	1858A	0.520"	1859A	0.406"
RF (WIRELESS ANTENNA)	RG-8/U (50 OHM)	BELDEN	9913F7	0.405"	89913	0.364"
RF (MICROWAVE ANTENNA; RISER-RATED)	HELIAX (50 OHM)	ANDREW	LDF4-50A	0.63"	-	-
CONTROL						
CONTROL (SERIAL APPLICATIONS)	(2) PAIR 22 AWG TWISTED PAIR	BELDEN	8723	0.160"	88723	0.148"
CONTROL (TOUCH/CONTROL SYSTEM APPLICATIONS)	(1) PAIR 22 AWG TWISTED PAIR &	BELDEN	1502R	0.250"	1502P	0.205"
CONTROL (NETWORK)	(1) PAIR 18 AWG					
FIBER						
MULTIMODE (HORIZONTAL)	(2) 62.5µM (FIBER COUNT MAY CHANGE)	COMMScope	N-002-DS-6F-FSUOR	0.15"	P-002-DS-6F-FSUOR	0.15"
MULTIMODE (HORIZONTAL)	(2) 62.5µM (FIBER COUNT MAY CHANGE)				P-002-DS-6F-FSUSL	0.15"
MULTIMODE (HORIZONTAL)	(2) 62.5µM (FIBER COUNT MAY CHANGE)				P-002-DS-6F-FSUYL	0.15"
MULTIMODE (HORIZONTAL)	(2) 62.5µM (FIBER COUNT MAY CHANGE)				P-002-DS-6F-FSUYL	0.15"
SMPT 304M CAMERA	(4) 20AWG COPPER, (2) 24AWG COPPER, (2) SINGLE MODE FIBER	MOHAWK	96040	0.362"	96920	0.294"

Project Title



NYU Hospitals Center
MSB
Renovations:
MEP Infrastructure

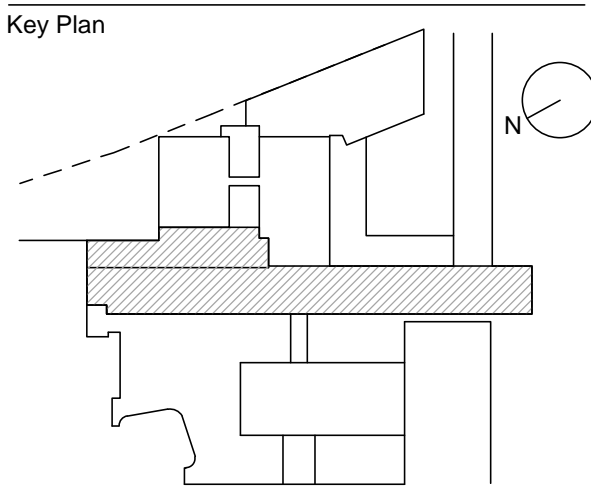
Owner
NYU Hospitals Center
550 First Avenue
New York, NY 10016
212.263.2450 tel

Architects
Ennead Architects, LLP
320 West 13th Street
New York, NY 10014
212.807.7171 tel 212.807.5917 fax

Mechanical Engineer
Jaros Baum & Bolles
80 Pine Street
New York, NY 10005
212.530.9300 tel 212.269.5894 fax

Structural Engineer
Severud Associates
469 Seventh Avenue
New York, NY 92024
212.986.3700 tel 212.687.6467 fax

Seal



3.	ISSUE FOR AV BID	01.20.2017
2.	ASR #22-R1	01.20.2017
1.	CONSTRUCTION DOCUMENTS	04.21.2014
No.	Revision	Date

Date 01.20.2017 Project Number 14521.S
Scale NTS

Sheet Title
AUDIOVISUAL MSB
FIRST FLOOR MURPHY
CONFERENCE ROOM
GENERAL CONDITIONS

Sheet No.
AV-002.00

Page No.
NYC DOB Number